



# GMT MONTHLY MEMBERSHIP PROGRESS REPORT

Results as of: 2/28/2018

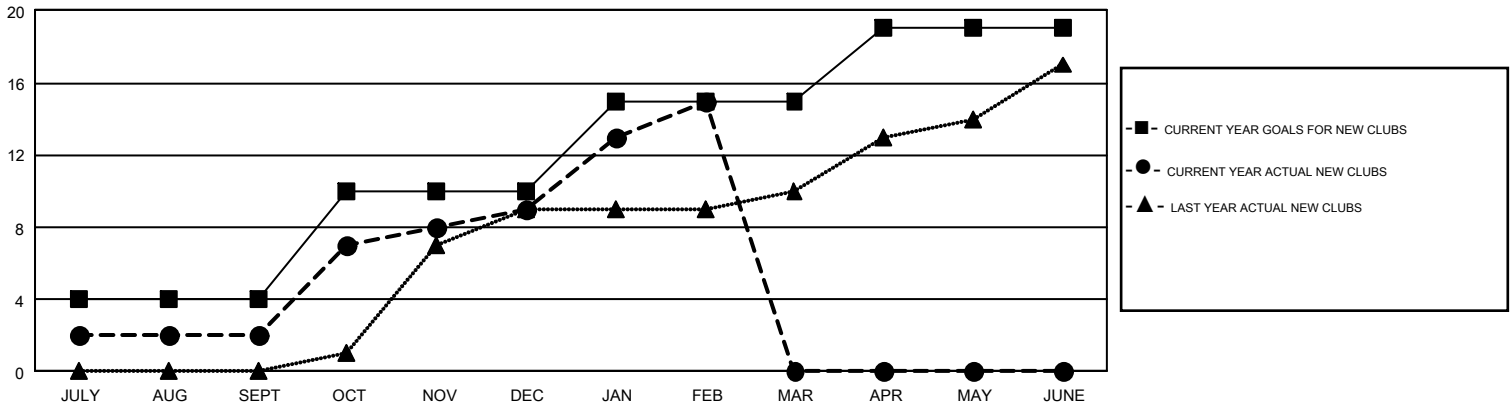
## GMT Constitutional Area 6-Afr, Group L

GMT: KAMAL JOSHI

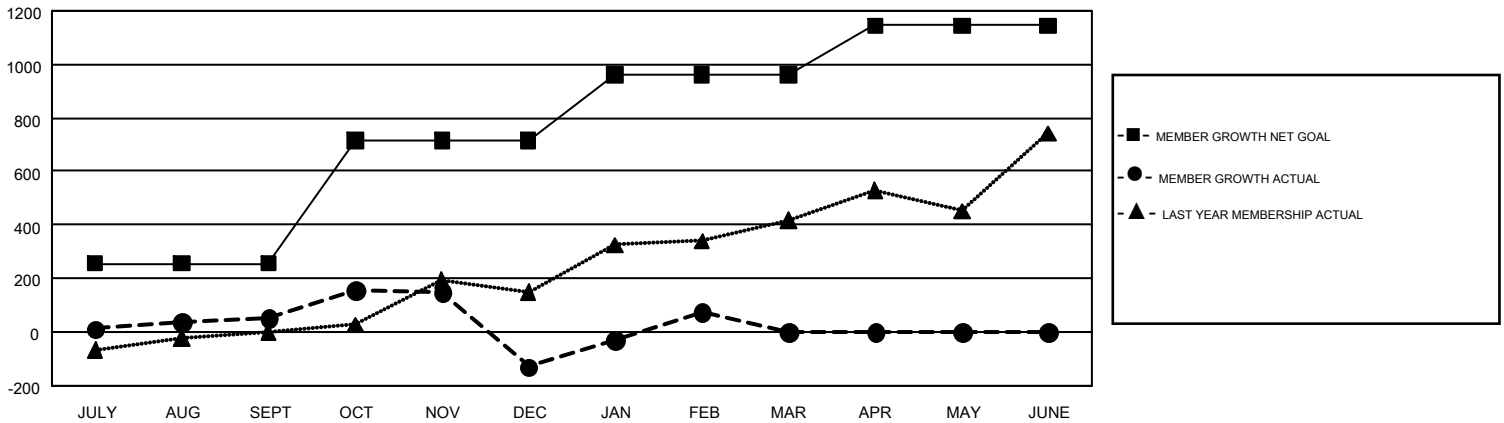
REPORT DOES NOT INCLUDE CLUBS IN UNDISTRICTED AREAS.

Clubs				Members			
RESULTS FOR 2017-2018				RESULTS FOR 2017-2018			
QUARTER	NEW CLUB GOAL	NEW CLUBS	DROPPED CLUBS	QUARTER	MEMBER GROWTH NET GOAL	MEMBER GROWTH ACTUAL	DROPPED MEMBERS ACTUAL (including transfers)
JULY/AUG/SEPT	4	2	0	JULY/AUG/SEPT	256	218	160
OCT/NOV/DEC	6	7	8	OCT/NOV/DEC	459	361	513
JAN/FEB/MAR	5	6	0	JAN/FEB/MAR	248	305	71
APR/MAY/JUNE	4	0	0	APR/MAY/JUNE	182	0	0

GOALS AND ACTUAL NEW CLUBS CUMULATIVE



GOALS AND ACTUAL MEMBERS CUMULATIVE



DROPPED CLUBS: 8	122 CLUBS OF 246 ADDED 1 OR MORE NEW MEMBERS	<b>GENDER DISTRIBUTION</b> MALE                    3,766 (61.75%) FEMALE                   2,333 (38.25%)
<b>DROPPED MEMBERS</b> DECEASED                    25 CLUB CANCELLED               138 OTHER                            581 <hr/> TOTAL                            744	<a href="#">CLICK HERE FOR CUMULATIVE MEMBERSHIP DATA</a>	TOTAL FAMILY UNIT MEMBERS                    1,189  FAMILY MEMBERS PAYING HALF DUES                    656